

SHRF Programs and Policies

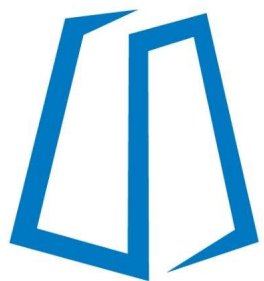
An Introduction

Presentation Agenda

- Getting to know SHRF
- SHRF funding programs
- The life of a funding program
- Starting an application
- Understanding peer review
- Program support
- The RMS
- SHRF policies
- Building a team
- Resources and questions

Presentation Agenda

- Getting to know SHRF
- SHRF funding programs
- The life of a funding program
- Starting an application
- Understanding peer review
- Program support
- The RMS
- SHRF policies
- Building a team
- Resources and questions



SHRF
SASKATCHEWAN
HEALTH RESEARCH
FOUNDATION

Saskatchewan Health Research Foundation (SHRF) funds, supports and promotes the impact of health research that matters to Saskatchewan

Strategic Goals

- 
- 1** Strengthen research capacity and competitiveness
 - 2** Increase investment in research and innovation
 - 3** Align research with stakeholders' needs

Key Activities

- 
- ✓ Develop and execute research funding competitions
 - ✓ Uphold a rigorous peer review process
 - ✓ Partner with other organizations
 - ✓ Measure impact and share stories
 - ✓ Act as a trusted and neutral convenor

Our Programs

CAPACITY

ESTABLISHMENT

Expanding Saskatchewan's capabilities for impactful health research.

SOLUTIONS

INNOVATION

Identifying & targeting creative solutions to complex problems.

IMPACT

Bringing solutions into action through Saskatchewan-based health research.

Our Programs

CONNECTIONS

MOBILIZE

Connecting knowledge users to research and evidence they can use.

ALIGN

Connecting researchers with stakeholders and communities to develop impactful and relevant research.

PARTNERSHIPS

VARIOUS PROGRAMS

Strengthening Saskatchewan's health research climate through diverse partnerships.

The Life of a Funding Program



Competition Launch

Information Webinar



Eligibility Check

Application Submission



Peer Review

Funding Decision



Recipient Announcement

Funding Follow-Up



Starting An Application

1

Review available funding, requirements and timelines

→ Current opportunities available online at shrf.ca/opportunities

→ Download '[Application Package](#)' and '[Funding Guide](#)' for details, eligibility and policies

Application Package

- Available funding
- Project and team eligibility requirements
- Program-specific allowable expenses
- Review criteria
- Application instructions

Funding Guide

- Application and grant management processes that apply to all Programs
- Applicant team member roles
- Allowable expenses and rates
- Reporting to SHRF

Starting An Application

2 Attend webinars and ask questions!

- Webinars can be attended live, or viewed later via the [SHRF Youtube channel](#)
- Contact SHRF early with any questions

3 Begin online submission via SHRF RMS


- Log in or register at shrf.smartsimple.ca
- All application and grant information is submitted electronically


[Note: Responsibility of Principal Applicant](#)

Research Management System (RMS)



Login

 Email

 Password

Log In

[Forgot Password?](#)

Learn more about our

 [Privacy & Security policies](#)

New to the System?

[Register](#)

Research Management System

Welcome to Saskatchewan Health Research Foundation's Research Management System - SHRF RMS. SHRF is the provincial health research funding agency and the RMS is used for completing and submitting applications and grant management activities, along with our peer review process.

If you require assistance, contact the Programs Team at helpdesk@shrf.ca anytime between Monday to Friday, 8:30 a.m. to 4:30 p.m. (excluding holidays).

Resources are available here: <https://www.shrf.ca/resources>

Note: SHRF RMS is optimized for the most recent versions of Chrome, Firefox, Edge and Safari. If you are experiencing problems while using Internet Explorer, we recommend trying another browser

Research Management System (RMS)

Applications

0

Eligibility Applications

Complete and submit your eligibility applications.

1

Full Applications

Complete and submit your full applications.

0

Action required: Contribution Forms

Complete and submit your contribution forms for applications you are a part of.

3

Submitted Contribution Forms

View contribution forms you have submitted and will be included in applications you are a part of.

14

Results

See your results, review comments and view all previously submitted applications.

2

Grant Authorization

Accept your grant and remediate special conditions. View your AFF

Grant Management

1

Reports

View, complete and submit required grant reporting. (Draft reports can be saved prior to submitting to SHRF.)

0

Change Requests

Complete and submit your change requests for a currently funded grant.

1

Grant Activity Decisions

Decisions regarding reports & change requests

Understanding Peer Review

- All* SHRF funding applications go through peer review
- Committees of active researchers and health professionals use a rating scale of excellence to assess research proposals (Criteria included in application package)
- SHRF only funds applications that rank above a 3.5 on the rating scale

Common Review Criteria:

- Is it relevant and original?
- Is it feasible and ethical?
- Does it adhere to the objectives and priorities of the funding program?
- Does the researcher or team have the expertise and support to conduct the research?
- What are the expected impacts? (next slide)

Rating Scale:

- 4.5 - 4.9** Outstanding: highest funding priority
- 4.0 - 4.4** Excellent: very high funding priority
- 3.5 - 3.9** Very good: high priority, should be funded
- 3.0 - 3.4** Good: acceptable, but low priority
- 2.5 - 2.9** Fair: not acceptable for funding but shows promise
- 2.0 - 2.4** Poor: needs major revision
- <2.0** Seriously flawed

Understanding Peer Review

➔ Applications are asked to address and will be reviewed by the CAHS Impact Framework

Evaluation Framework

Canadian Academy of Health Sciences (CAHS) Impact Framework (2009)

- 1 Building Capacity**
e.g. personnel, additional research activity funding, infrastructure
- 2 Advancing Knowledge**
e.g. research quality, activity, outreach
- 3 Informing Decision Making**
e.g. pathway from research to health outcomes
- 4 Health Impacts**
e.g. health status, determinants of health, health system change
- 5 Broad Economic and Social Impacts**
e.g. activity, commercialization, health benefits, social benefits

Program Support



**Karen
Tilsley**

Director of Programs & Partnerships

- Partnership funding and collaborations
- Solutions Program

ktilsley@shrf.ca



**Danielle
Robertson-Boersma**

Programs & Peer Review Manager

- Peer Review
- Capacity Program

drobertson-boersma@shrf.ca



**Chelsea
Cunningham**

Programs & Engagement Manager

- Grant Management
- Research Engagement
- Connections Program

ccunningham@shrf.ca



**Tanya
Skorobohach**

Programs & Peer Review Coordinator

- Coordination of Programs Team
- RMS Assistance

helpdesk@shrf.ca

Not sure who to contact?

Reach out to fundinginfo@shrf.ca and we will connect you with the right team member!

SHRF Standard Policies

- ➔ You can find important policies that apply to all SHRF programs in the latest **SHRF Funding Guide**
- ➔ Any additional or exceptional program-specific policies are outlined in the relevant **Application Package**

SHRF Standard Policies

- ➔ SHRF funds support activities in-province only
- ➔ Principal Applicants must be affiliated with an institution with a SHRF MOU (or for some programs, a registered charity), be autonomous (not a trainee or contracted researcher) and reside and work in Saskatchewan for the duration of the grant
- ➔ For purchase rates, trainee and staff salaries, etc., applicants should refer to institutional policies
- ➔ Ongoing ethics and safety approvals are required for research activities
- ➔ Principal Applicants and Co-Applicants cannot be compensated from grant funds
 - Exception for **Knowledge Users** (approved time-release) and **Persons with Lived Experience** (expenses and honoaria)
- ➔ Funded grants agree to submit yearly progress reports and financial statements, and to inform SHRF of any changes in proposed projects or eligibility to hold funds

Building A Team

SHRF encourages applicants to build teams including co-applicants in different roles. The three types of roles are:



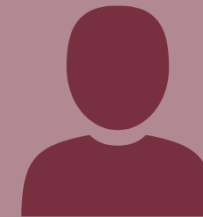
RESEARCHER

An individual with formal training
**who holds a position
which supports them to
pursue research**
and whose expertise
supports the proposed
research project.



KNOWLEDGE USER

An individual
**interested in the applications
of the knowledge generated**
from the proposed research, who
plays an active role in mobilizing
knowledge to ensure research
results have an impact.



LIVED/LIVING EXPERIENCE

An individual whose
contributions to the proposed
research are related to
**their personal
experience with a health
issue or experience as
an informal caregiver.**

Resources & Questions

Check out these links for helpful resources



Current Funding Opportunities

shrf.ca/opportunities



SHRF Matters Newsletter

shrf.ca/contact



Funding Guide & RMS Manual

shrf.ca/resources



RMS How-To Videos

SHRF Youtube